

Certificate of Analysis

LudgerPure™ CAPTS Labeled NA2 Glycan

Cat. #: CAPTS-NA2-01

Batch: C03H-01

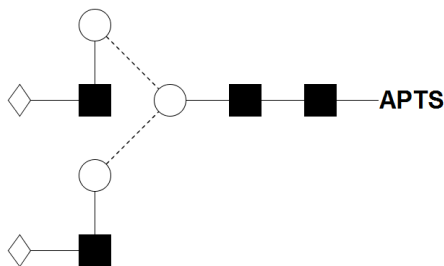
Size: approx. ~20 pmol

Expiry Date: 17 Mar 2025

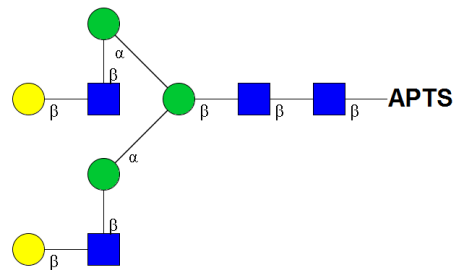
Alternative Names

A2G2, G2

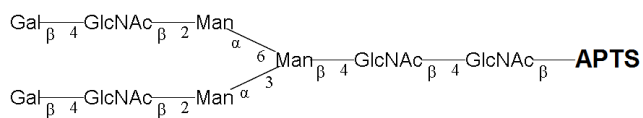
Glycan Structure



Oxford Notation



CFG Notation



Text Notation

Purity: 81.4% CAPTS labeled NA2 glycan, as assessed by HPLC - see Fig 1.

Test performed 18 Mar 2020.

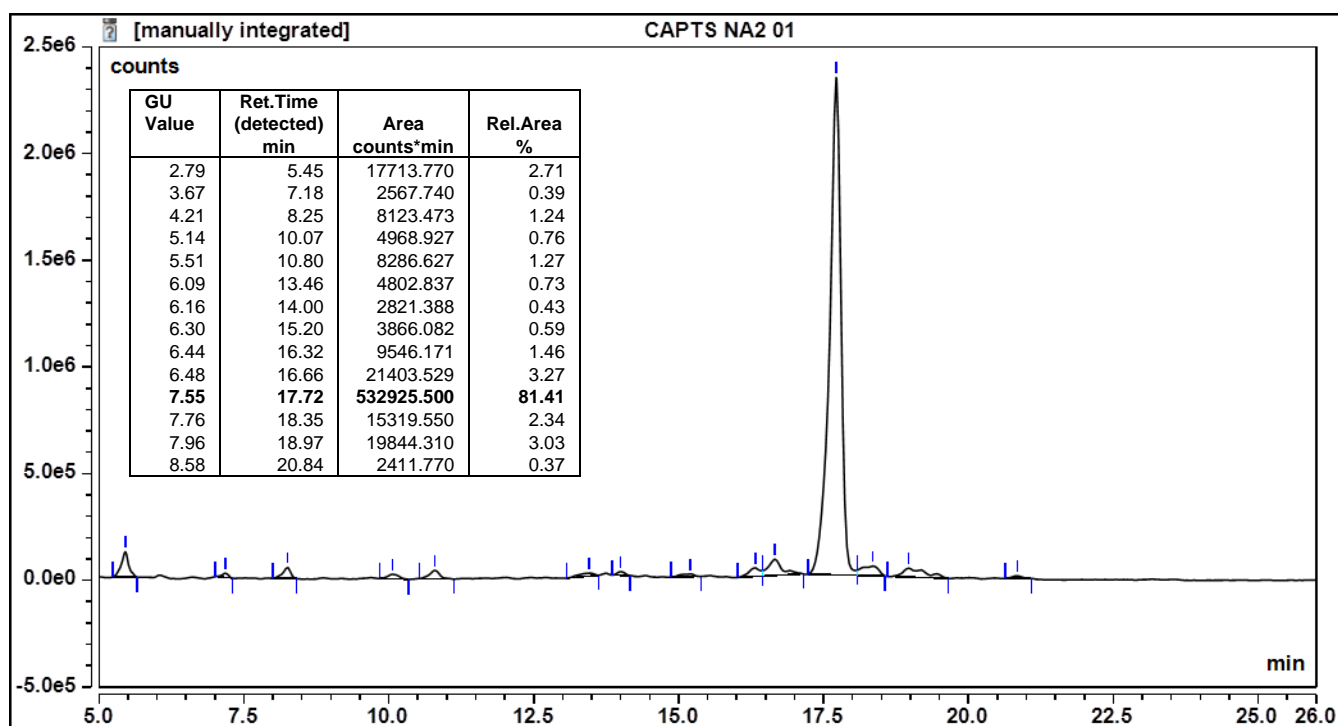


Figure 1: HILIC HPLC profile of CAPTS labelled NA2 glycan (see method conditions below) (Cat. #: CAPTS-NA2-01, Batch C03H-01).

*NA2 glycan structure identified by MALDI, MS & HPLC (GU value comparison to GlycoBase). This structure is drawn according to the scheme developed by Oxford-Dublin Glycobiology Laboratory (see Fig 2).

CAPTS NA2 peak seen above, eluted at 17.72 minutes, under the following conditions:

Column: Waters BEH Glycan 1.7µm column (150mm)

Temperature: 40 °C

Solvent A: 50mM ammonium formate pH 4.4 **Solvent B:** 100 % acetonitrile

Gradient:

Time (min)	Flow (mL/min)	%B
0.0	0.4	70
27	0.4	62
28	0.2	0.0
32	0.2	0.0
33	0.2	78.0
40	0.4	78.0

Detector: Fluorescence

Excitation wavelength: 448 nm

Emission wavelength: 510 nm

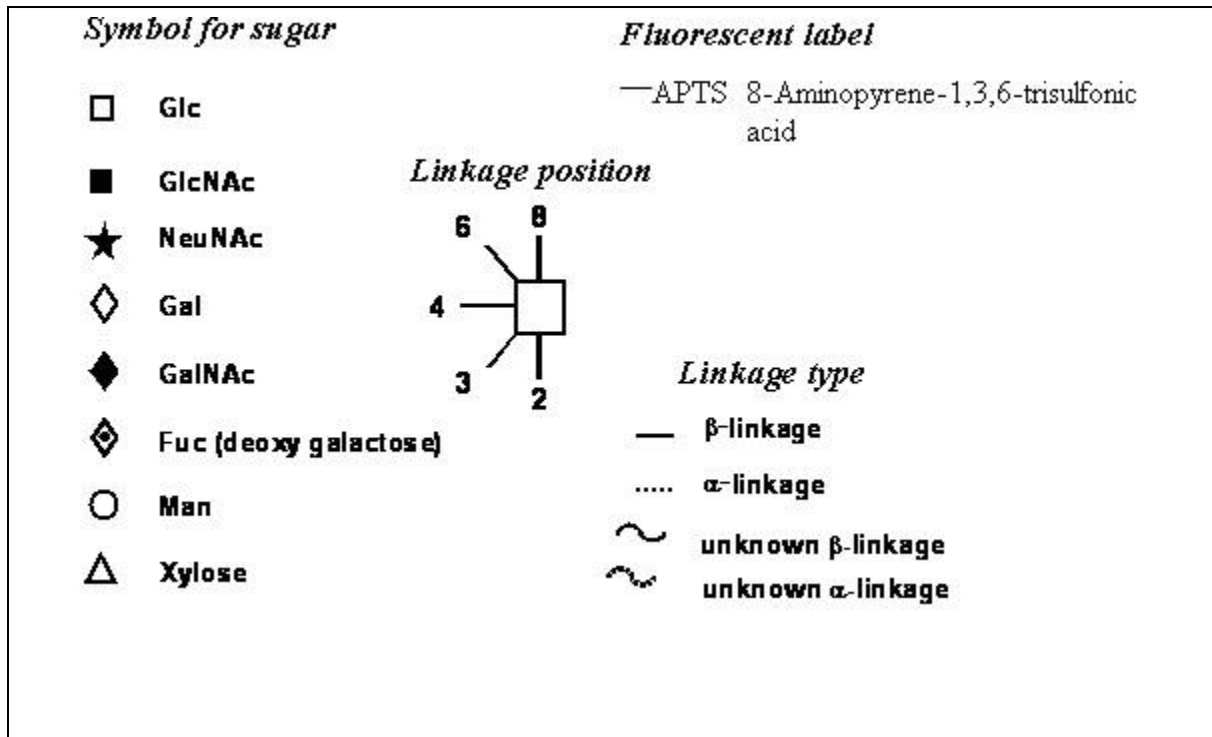


Figure 2: GlycoBase glycan structure key.